

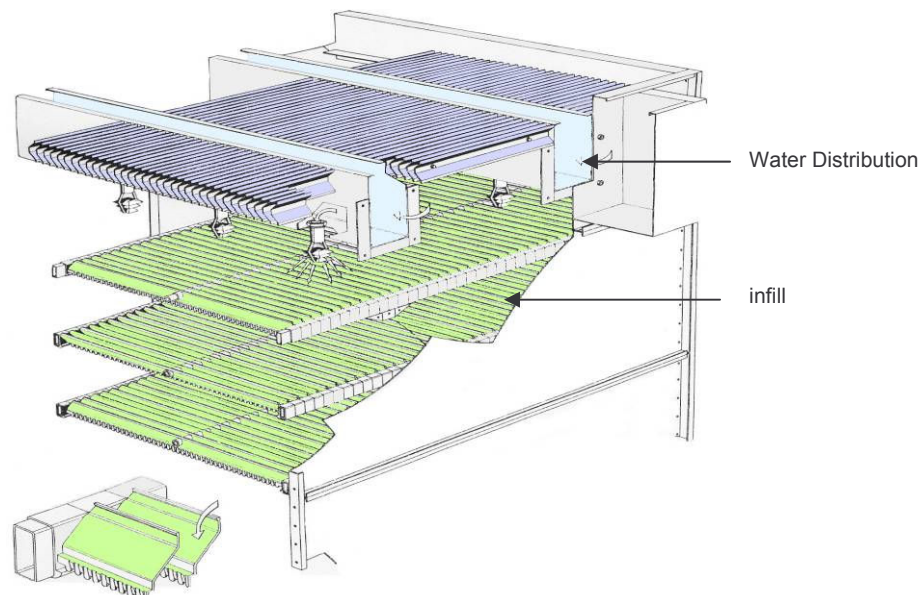


Flow rates : from 15 to 310 m³/ h

RC Series

**Centrifugal fan
Infill : X-STREAM
For very heavy duty waters**

RC Series



Infill : X - STREAM

It is made of PP blades. They equally spread the water along the blades, into drops down to the lower blades layers. The cooling occurs during the drops fall between the blades layers ; therefore, this exchange surface is highly resistant to clogging. It can be used for water with solids content up to 400 ppm. By thermal expansion, the X-STREAM is self cleaning in the case of water with high salts content.

Water distribution

Water is distributed by PP pipes or by steel open air channels. They are installed with PP nozzles especially designed to achieve an optimal distribution through the whole air section, and with large water nozzles to avoid clogging even in the case of high suspended solids content. These nozzles operate under low pressure, in order to low pumping head and to distribute large size drops, which prevents the drift from getting out of the cooling tower.

Tower casing

All the panels are folded twice or 4 times at the 4 sides of the panels. This design secures extremely rigid sheets which, once assembled, provide an unequalled sturdiness and tightness to our towers.

Large capacity basin

The basin incorporated to the tower has been designed for long thermal inertia to compensate the process thermal fluctuations. The basin is inclined and plane to secure a complete and clean drain. Large access doors are provided : 540 x 540mm. Finally, all the connections are located on the same panel (overflow, drain, make up water supply, electrical heater ...).

To avoid bacteriological growth, the assembly of the panels is made without any welds and without screws on the parts in contact with water.

Environment protection

Two levels of sound attenuation :

- **IB** sound attenuation, without absorbed power increase : housing of the fans by self supporting panels, coated with sound attenuating material. At the air outlet, an exhaust cone, coated by acoustic foam, is supplied.
- **Special** sound attenuation : IB base with casing with baffles at both air inlet and outlet, with whole tower casing attenuation, according to sound level to reach.

Plumeless system : JACIR – AIR TRAITEMENT system (Option : see open circuit hybrid towers series **RCIM**)

- ✓ Plume reduction system,
- ✓ Plume suppression system,
- ✓ 30% to 50% water savings.

Anti-corrosion protection - 3 options :

- 275 gr / m² galvanized sheets coated outside with zined paint. All the sheets are folded onto the outside of the tower in order to ensure that the inside of the tower is completely protected by the zinc coating.
- Stainless steel sheets (304 L or 316 L) : **RXC** series.
- Option for protection with a polyester powder baked before assembly of the tower (for all sheets not in direct contact with water).

Sound and energy savings

The fans, designed and made by Jacir, have been continuously improved. The 2 air inlets are oversized for low pressure and low speed operation : very low sound level. So the power consumption is very low. The fans are located in the dry air flow, out of the basin, and are protected by thick latex based paint : 350 to 400 microns on each side).

Options

Automatic Deconcentration by Induction (Dai), frequency converter, support beams, level switch with electro valve, control panel, explosion proof motors, site erection...



Distributed by...